

Material:

Housing: High temperature housing withstands IR and VPR soldering methods.

Contacts: Brass.

Plating: Gold plated over nickel.
Tin plated over nickel.

Electrical Characteristics:

Current Rating:1 AMP.

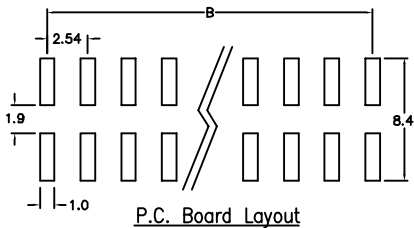
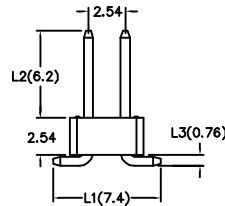
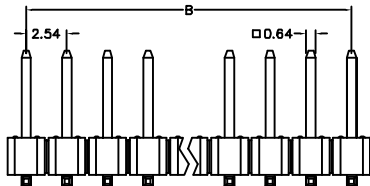
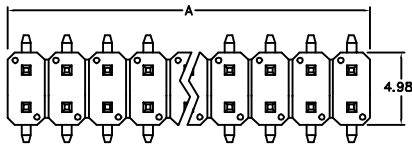
Insulator Resistance:5000MΩmin. at DC 500V.

Contact Resistance: 20mΩmax. at DC 100mA.

Operating Temperature: -65°C~+125°C.

Features:

- * Double row Surface Mount.
- * Low profile insulator 2.54mm (0.100").
- * Customs design provides wide product flexibility.



Position	4 Thru 80
Dimension	
A	2.54 X No. of Positions /2
B	2.54 X No. of Positions /2-2.54

Ordering information

PH03- 2 40 1 3
 Series Double Row No. of Pin Per Row 1: Gold Plated 2: Tin Plated 3: S.M.D Type

Custom Design: S.M.D. (i.e. PH03-24013/L1 /L2 /L3)